



**QUEEN'S
UNIVERSITY
BELFAST**

**COMMUNITIES
AND PLACE**

PHASE 1 PROGRESS REPORT 2021 - 2023



**SUPPORTING
COMMUNITIES THROUGH
RESEARCH, ENGAGEMENT
AND IMPACT**



CONTENTS

INTRODUCING THE QCAP APPROACH	2
Working in-place with communities to create impact	2
The six pillars of the QCAP approach	3
STRATEGIC ALIGNMENT	4
Internal strategy and projects across the Institution	4
Wider strategic relevance	5
EVIDENCING ADDED VALUE AND IMPACT	8
Direct investment	8
Indirect investment	10
Non-monetary impacts	11
KNOWLEDGE EXCHANGE AND SHARING	12
QCAP STAKEHOLDER ENGAGEMENT	14
Aligning our institutional engagement and community research agenda	16
Maximising wider opportunities and building our UKRI footprint	17
International reach	18
REFLECTIONS FROM THE DIRECTOR	19
ENGAGED RESEARCH OUTPUTS	20

Introducing the QCAP approach

Working in-place with communities to create impact

Combining academic and experiential knowledge from the community, QCAP uses a **'place-based'** approach to co-create new solutions to address persistent physical, economic, and social challenges as well as strengthen the engagement between Queen's University and its surrounding communities.

“ A key aspect of the QCAP approach in the Market has been the engagement of the University at a grass roots community level matched with impact driven research with the intended outcome of building ownership and empowering our poorest communities achieve and reconnect to the economic, social and cultural life of the city. I welcome this groundbreaking approach and look forward to seeing it roll out in other communities across Belfast and beyond”

Deirdre Hargey MLA, South Belfast

QCAP's pilot community has been in the Market area of Belfast and aspects of its approach has been applied across other places across the north, east, west, and south of the city, notably the Greater Shankill which will represent a key strategic and operational focus in the next phase of QCAP.

“ QCAP's approach to working with the MDA and community of the Market has been illuminating, not just within the breadth and depth of that engagement but in the sense of partnership and ownership the community have clearly developed over the course of the pilot project. As a resident and community activist within an inner-city area which shares many similar issues with the Market, and many other comparable communities across this city, I think this model of engagement has a potentially transformative effect on communities and the way in which they view their community, and their place in this city”

Cllr Tina Black, Belfast Lord Mayor

QCAP's academic team engages with communities through action working groups as well as pre-existing community-led structures to address local need and challenge areas grouped around three **interconnected dimensions of place:** Community Wealth Building and the Social Economy, Community Health and Wellbeing, Education and the Knowledge Economy.

This applied programme of research is underpinned by a qualitative Longitudinal Study of the Lived Experience of the Partner Community which also serves as a barometer of QCAP's work in the area. The QCAP approach is also informed by its membership of UKRI centre bids as well as regular engagement with fellow QUB academic staff that sit on the Strategic Advisory Group as well as several global institutional partners who make up the International Advisory Board.



QCAP team members join the MDA for the launch of their Rebuilding the Local Economy Survey

The six pillars of the QCAP approach

The six pillars below provide a tangible framework that allows QCAP to engage with different place-based partners and create impact for communities surrounding Queen’s University Belfast and beyond.

Using research and data to uncover issues and solutions, QCAP translate empirical findings into real change through targeted support, robust action research projects and policy advocacy campaigns. This framework also ensures capabilities are embedded within communities to build new skills and further advance sustainable change.

	<p>1. Mechanisms for Engagement</p> <p>QCAP develops new action working groups or connects with appropriate place-based partnerships that can facilitate effective engagement and co-production with a designated partner community. The model includes a fully funded community co-ordinator post and a clerical support worker to enhance the University footprint but also deepen the engagement with the partner communities and translate academic research into action.</p>
	<p>2. Research and Evidence Synthesis</p> <p>QCAP’s approach is underpinned by a body of empirical research, academic theory, international evidence and ‘what works’ practice organised around the four interconnected dimensions of place. These four dimensions also reflect the practical experience and interdisciplinary academic expertise of the QCAP academic research team. A systematic review is currently being completed to benchmark the work of QCAP against other academic institutions working to advance a civic university model.</p>
	<p>3. Data for Action</p> <p>QCAP’s approach identifies possibilities around place-based census or programmatic data and explores how it can be innovatively applied to benefit or advance the needs of our partner communities. This includes the development of bespoke data products such as a community data dashboard which is being developed with industry support from local IT software company Kainos via their OneHealth Pre-Accelerator programme.</p>
	<p>4. Practical Translation Tools</p> <p>QCAP delivers innovative research methods, evaluation methodologies such as Social Return on Investment and targeted technical support to advance community-based initiatives and regeneration projects that address areas of local need. This includes the delivery of a ‘Tackling substance use together’ programme in the Market which aims to address local community concerns around substance use and poor mental health.</p>
	<p>5. Policy Advocacy</p> <p>QCAP draws on place-based evidence to advocate for institutional change and develop a more robust regulatory environment to support the advancement of a targeted policy area such as Community Wealth Building, a new piece of legislation or a government funded programme of transformational work. QCAP are also an active part of the People and Place Review which is working with the Department for Communities to improve the delivery of place-based anti-poverty strategies such as Neighbourhood Renewal.</p>
	<p>6. Building Capabilities</p> <p>QCAP’s approach builds the capabilities of our partner communities through the provision of bespoke training, technical assistance, dedicated research, and active participation in community peer learning research networks. A good example of this was the training QCAP provided for its community partner in the Market around research ethics, data collection and analysis via the community data dashboard.</p>

Strategic alignment

Internal strategy and projects across the Institution

Core investment into QCAP's research and engagement work with local place-based partners is supporting and advancing Queen's University Belfast's Strategy 2030, specifically around the strategic priority 'civic and social responsibility and economic prosperity'.

“ Queen's Communities and Place illustrates this commitment (in Strategy 2030), providing sustained support for academic colleagues to work with community partners, learning from the valuable experience our community partners possess”

Prof Sir Ian Greer, QUB President and Vice Chancellor

In addition to its programme of work with the pilot Market community in South Belfast, QCAP has developed other committed partnerships with the BUILD regeneration project in Greater Shankill and are already advancing a programme of work that will be scaled in the next proposed phase of QCAP via a Memorandum of Understanding with the Greater Shankill Partnership Board.



QCAP staff engaging with young people from the Market during the consultation for the STEAM Summer School

QCAP's delivery will also advance the work and remit of other parts of the institution that are seeking to strengthen how QUB engages or works with local communities. This includes Widening Participation, the Belfast Region City Deal, QUB People and Culture Skills and Employment Academy, and ECIT. Given its established footprint in different places across Belfast, QCAP represents a pivotal broker that can co-ordinate activity and support laterally from across the institution in a way that creates impact and transformational change for surrounding communities. A good example of this is how QCAP is working with its pilot community partner: the Market to explore how best social value commitments outlined in procurement contracts can be delivered. This social value work is important, especially given the scale of construction contracts likely to be delivered through the Belfast Region City Deal and the potential for wider community benefits.

Finally, delivering impactful engagement with Northern Ireland's most deprived communities (many of which surround QUB) is important, especially as the institution works to secure a sustainable legacy from Good Friday Agreement 25. Working in this context, QCAP have developed and piloted an approach that can support social and economic transformation in these communities, which despite wider peace effects continue to remain the most divided and deprived.

“ This is really a unique partnership where there's joined up working and collaboration from the start and embedding that from a community level... addressing inequality in a systemic way, using research and learning from our universities”

Deirdre Hargey MLA, South Belfast

“ In the contemporary research landscape, underscored by UKRI, communities are very much partners in co-producing innovative research with impact. Crucially QCAP will continue to connect research to communities, giving an authentic community voice to existing major initiatives such as the Belfast Regional City Deal”

Prof Janice Carruthers, Dean of Research, QUB, School of Arts, English and Languages, Modern Languages

Wider strategic relevance

The extension of the QCAP approach has also enabled a positive contribution across a range of wider policy and other strategic areas outside the institution including to date: the Department of Communities and their People and Place Review, policy recommendations for the Northern Ireland Housing Executive and Community-Led Housing, Citizen's opportunities for Digital Innovation CODI and the Belfast Urban Innovation Framework. The diagram below represents several other strategies and priority areas most closely aligned to QCAP's growing remit and expertise at the institutional, city/region wide, national, and international level.

“ Knowledge exchange and learning from the QCAP team has been invaluable in shaping our thinking on CODI (Citizen Opportunities for Digital Innovation) to date and we believe there are clear opportunities for alignment between our work. We look forward to exploring these further and working in partnership with QCAP so we can enrich and accelerate opportunities for citizens and local communities, enabling them to shape the technologically enabled city they live in”

Deborah Colville, Head of City Innovation Office and Smart Belfast programme

Priority areas and strategies

INSTITUTIONAL

- Queen's University Belfast Strategy 2030
- Queen's University Belfast Widening Participation Team
- Queen's University Belfast North America Office
- Queen's University People and Culture, Skills and Employment Academy
- Queen's University Belfast Social Value - Partnering public sector contractor to deliver social value within QUB contracts (Faithful and Gould)
- Queen's University Bright Futures Collective
- Queen's University REF Impact Case Studies
- Vital role in the accreditation and extension of the Civic University model
- Agreement 25 legacy and the contribution of QUB via the engagement work of QCAP

CITY/REGION-WIDE

- Belfast Region City Deal/QCAP - Fulbright Specialist Award 'Bringing The community Voice into The Belfast Region City Deal.
- Community Wealth Building Policy Agenda
- People and Place Review
- Anti-Poverty Strategy
- Belfast City Council Belfast Promise
- Belfast City Council CODI
- Northern Ireland Housing Executive
- Fair Start Education
- Preventing Harm empowering recovery – Regional Drug and Alcohol Strategy
- Northern Ireland Mental Health Strategy 2021-2031

NATIONAL

- UKRI Strategic Co-ordination Hub Local Policy Innovation Partnerships
- ESRC Centre in Community Participation and Connectedness
- ESRC Enable, Discovery and Use of the Census 2021/2022 data.
- Innovate UK - Community Research Network Grant/ Programme
- Peace Bid - with Trinity College Dublin, University of St Andrews and the Digital Health innovation Centre Scottish Government
- National Coordinating Centre for Public Engagement

INTERNATIONAL

- University of Chicago Chapin Hall
- Belmont Data Collaborative
- The European Consortium of Innovative Universities
- ArtEZ University of the Arts, Netherlands

“ QCAP’s collaborative approach involving local communities, the Department and Queens has been outcome driven. Together we have co-written journal articles for publication and I have been able to support a number of research bids. This included contributing to the successful UKRI bid, with Birmingham, for the Strategic Co-ordination Hub of the Policy Innovation Partnership...This link with the Local Policy Innovation Partnerships across the UK has the potential to contribute significantly to policy development in the Department and across Government through the UK-wide shared learning it should bring”

Moira Doherty, Deputy Permanent Secretary within the Department for Communities with responsibility for the Engaged Communities Group

QCAP CASE STUDY

Policy Advocacy in Practice



QCAP academics have completed a policy facing research project on Community Wealth Building and explored its potential for creating alternative and more socially just economic models across Northern Ireland. The research was co-produced with sectoral intermediaries Development Trusts Northern Ireland (DTNI), Trademark, and supported by Minister Hargey of the Department for Communities.

The findings were distilled and published across a series of Technical Advisory Papers (TAPs), participation in a Ministerial Advisory Panel and through 26 policy recommendations (organised around the five pillars of Community Wealth Building) were presented to the Minister at a launch in October 2022.



QCAP present the recommendations of the Ministerial Advisory Panel on Community Wealth Building to Department for Communities Minister Hargey



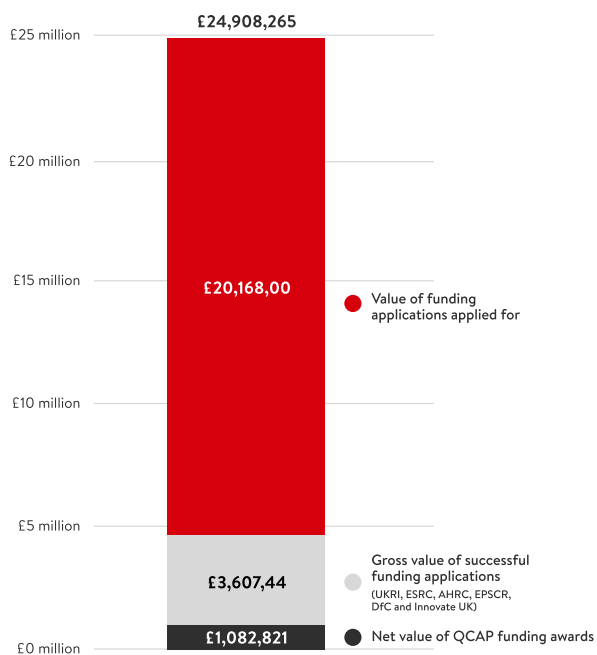
Evidencing added value and impact

QCAP demonstrates a capacity to add monetary value and create impact by attracting inward investment to support place-based working in collaboration with its research and community partners. This monetary leverage to date is made up of a blend of both direct as well as in-direct investment which is outlined below.

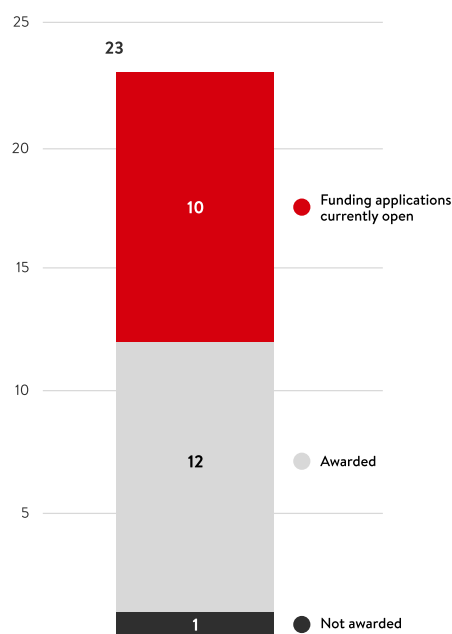
Direct investment

As of June 2023, the graphic shows the total bid applications made and how QCAP has leveraged direct investment totalling £1.1 million made from contributions by national funding research councils such as UK Research and Innovation (UKRI). This includes a recently successful UKRI bid as a partner for the National Strategic Co-ordination Hub for local policy innovation partnerships across the UK. QCAP's contribution to the hub is underpinned by its own place-based research agenda and the approach in general will benefit from peer learning experiences of working across a network of academic institutions that also deliver place-based engagement with communities.

Total funding applied for



Total number of bids for funding



The initial contribution made by the University was £899,483 over 3 years. The £1.1 million QCAP has leveraged to date shows how we have recouped that investment and are on a pathway towards sustainability but still need core support.

QCAP has also brokered investment from smaller but flexible funding streams located across the University, including those administered by Public Engagement. This investment has supported in-place working across QCAP's community partners, notably via technical feasibility work for the BUILD Shankill project and the design of relevant interventions such as the Community Wellbeing Kitchen in South Belfast. Positive engagement with public officials working in the Northern Ireland Civil Service, has also leveraged investment support to develop and scale the QCAP approach.



“ We are well aware it’s (Substance use) going on in the Market. We are working along with Queen’s on this; it’s not short term, this is long-term”

Local Market resident

“ It’s good to see this innovative programme about substance use”

Local Market resident

QCAP CASE STUDY

UKRI National Strategic Co-ordination Hub



The co-ordination hub consortium is led by the University of Birmingham and QCAP is joined by other academic partners from the University of Manchester, University of Glasgow, University of Exeter, University of York, University of South Wales, London School of Hygiene and Tropical Medicine as well as colleagues from Involve and the National Co-ordinating Centre for Public Engagement.

Funded until 2026, the Strategic Co-ordination Hub seeks to address nationwide issues through local partnership and will develop a programme of capacity-building activities to address place-based challenges via a what works approach.

QCAP CASE STUDY

Leveraging support from Government



A proportion of direct investment was secured from the Department of Communities to support engagement with QCAP's pilot Market community in South Belfast. This has funded the salary of 2 posts, a community coordinator post and a clerical support post which facilitates the translation of academic research into the delivery of place-based interventions and action projects.

A positive example of this work has been the co-design of a community-based health and wellbeing programme inclusive of a community led Tackling Substance use Together Programme – components include a Naloxone training initiative, a substance use early warning system delivered through local social media, a family support intervention and monthly substance use awareness training for young people and older residents. Co-ordinated via the QCAP supported health action working group, the training brokered supplementary input from Market Development Association staff, Youth Forum and other academic and sector partners (e.g. Extern, fellow QUB academics, advisory council for the misuse of drugs as well as residents of the Market community).

Indirect investment

QCAP has also leveraged financial opportunities for its community partners through signposting, sectoral research, technical assistance, the application of social return on investment techniques and other relevant monitoring and evaluation frameworks.

This contribution has leveraged a gross aggregated investment of £11.47 million into emerging built projects or programmatic activity that address place-based inequalities across multiple sectors including the social economy, employability, housing, health, and education.

It is important to outline how this indirect investment (represented by grant aid, loans, and social finance products) cannot be claimed in its entirety by QCAP. In the final evaluation it will be deflated to reflect the net contribution made by all partners involved in securing the investment.

Total funding for community partners

COMMUNITY PARTNER	INVESTMENT TYPE	INVESTMENT VALUE (£)
Belfast Works	Shared Prosperity Fund	£10.5 M
Hosford Homeless Housing (East Belfast Mission)	Financial Transactions Capital Loan	£2 M (if successful)
Hosford Homeless Housing (East Belfast Mission)	Commonwealth Housing Loan	£500,000
Market Development Association	Neighbourhood Regeneration Fund	£440,000
Community Research Networks	Stage 1 Small Grant	£25,000
Community Research Networks	Stage 1 Large Grant	£600,000 (if successful)
BUILD Shankill	QUB Various Pots	£5,500

“ QCAP provided us with crucial technical support in producing a business case for a loan of £2 million to purchase houses for people experiencing homelessness. Due to our capacity, we simply could not have undertaken this work without the support from QCAP. As above the process of undertaking this project was very collegiate and led to an increase of skills and knowledge in our team”

Aidan Byrne, East Belfast Mission

QCAP CASE STUDY

Tackling homelessness through Social Enterprise



QCAP academics completed a social return on investment analysis to forecast the potential impact of a transitional homeless housing project proposed by a local social enterprise called East Belfast Mission. This evaluation piece supported the community partner to attract a London-based social investor called Commonwealth Housing and successfully leveraged a £500,000 loan to pilot the model in practice.

In 2023, this loan was drawn down to acquire 5 homes and enable homeless individuals living in the East Belfast Mission hostel to transition into secure housing. The success of this pilot phase brokered an invitation from the Department of Finance to apply for an additional £2 million loan to scale the model via the Financial Transactions Capital Investment programme. This application required an outline business case, which QCAP co-produced in collaboration with technical input from other relevant partners.

Non-monetary impacts

Further to monetary impact, QCAP has implemented a dedicated monitoring protocol to capture and report its performance on a periodic basis to the QUB Strategic Advisory Group and members of the International Advisory Board. The impact created by QCAP's research and engagement work is also disseminated online via its social media platforms and a dedicated blog feature called QCAPTURES.

Attached in the appendix is a suite of recent testimonials collated from several academic, statutory and community partners who have worked with QCAP to date. Collectively these endorse the progress outcomes made by QCAP but also outline the scope for future research collaboration, place-based engagement, and the demand for applied research interventions of this nature.



QCAP work with the Market Development Association to distribute food hampers to support with the cost of living crisis during the Christmas period

Knowledge exchange and sharing

QCAP produces a diverse range of knowledge exchange outputs which are reflected in full detail in the appendix. These include peer reviewed academic journal articles, evaluation reports as well as policy advisory papers which have been co-produced with input from sectoral intermediaries Development Trusts NI and Trademark.

Research findings from QCAP's place-based longitudinal study Growing Up in the Market have also been translated into action projects that are co-produced with the Market Development Association for the benefit of Market residents. These include a community-based health and wellbeing programme, an adult education learning initiative, the delivery of cost-of-living food hampers and a local summer scheme that aims to encourage local young people to engage in STEAM subjects. QCAP have also shared knowledge and prompted wider critical debate through a podcast series that connects QCAP's research offering directly with policy facing and community audiences across the city and beyond.

“ We hope to work closely with QCAP on disseminating outputs of this nationally and internationally, in a variety of innovative formats (e.g. QCAP's leading expertise on podcasting) as well as traditional (e.g. QCAP presenting at the major QUB conference on net zero in 2024)”

Gavin Williamson, Multidisciplinary Research Development Manager, The Global Innovation Institute, QUB

QCAP CASE STUDY QCASTS series



QCASTs is a live podcast series produced by QCAP academics in collaboration with individuals working to support local communities. The podcasts explore the lived experiences as well as in-place challenges facing community-based practitioners as they work to tackle issues stemming from substance use, mental health, and suicide as well as the impact the cost-of-living crisis is having in our schools.

The series also explores the potential of key policy initiatives such as Community Wealth Building to address the needs of our most deprived communities and stimulate physical, economic, and social regeneration. Recently it also included a special podcast to mark the 25th anniversary of the Good Friday Agreement to reflect on its legacy effects by gathering perspectives from different communities across Belfast.



QCAP have produced a podcast series called QCASTs in collaboration with individuals working in and for communities

The Vikings

PHASE 1 PROGRESS REPORT 2021 - 2023

The Vikings began raiding Strangford in the early 9th Century and their language is still evident today in the Strangford name originating from the Norse 'Strangr' translating of Strangr of Strangr.

Their main focus of attack was monasteries and churches destroying centuries of...

...ions by the... inhabitant... their prese... the curr... and c...



QCAP stakeholder engagement

“As part of our work with a wide range of public and private organisations across the city and beyond, the work of QCAP has been held, up as an enabler for many communities none so more than the inspirational Market Development Association”

Harry Connolly, Director of Fáilte Feirste Thar

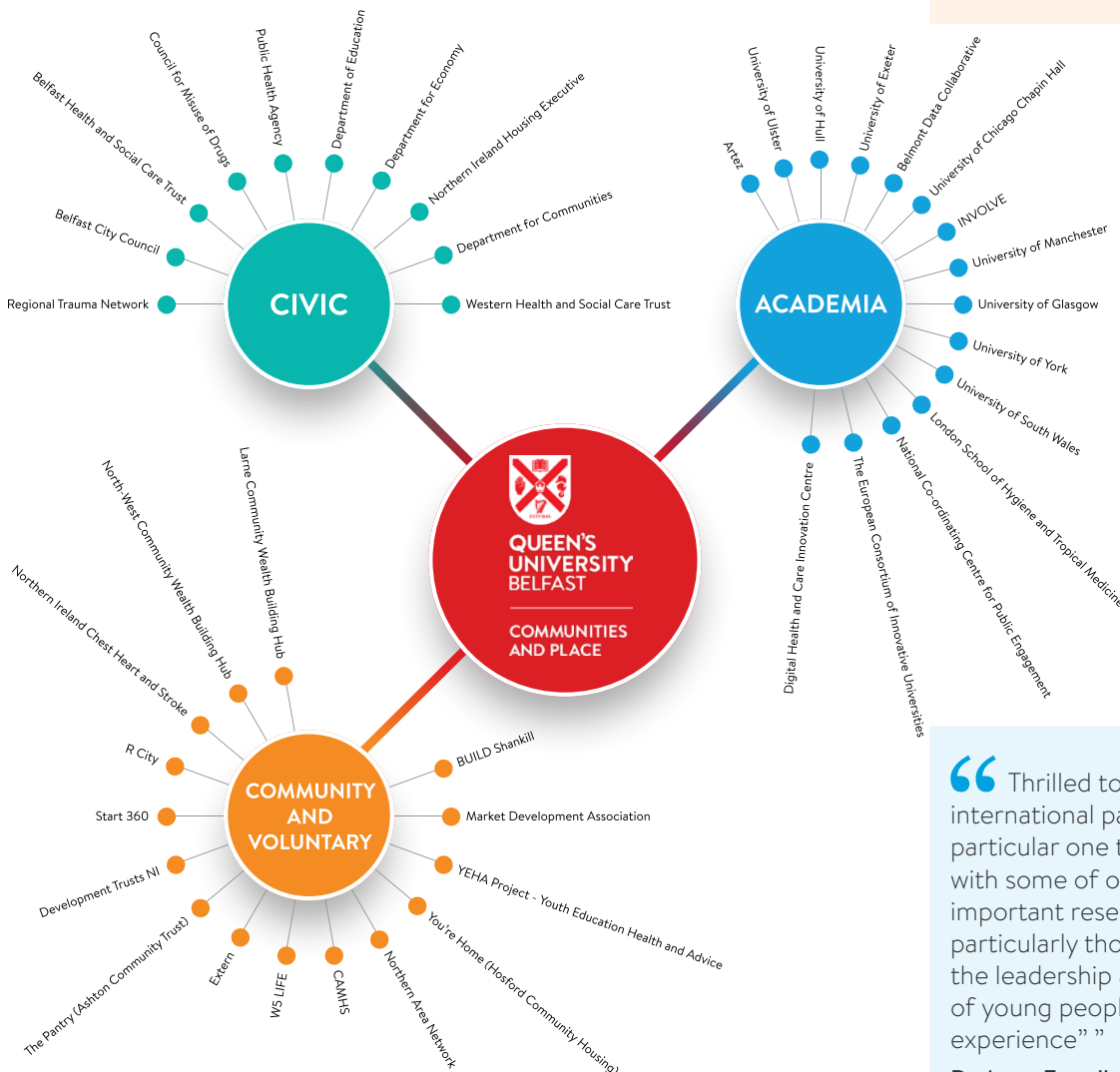
QCAP has developed numerous relationships with a variety of place-based partners, social enterprises, sectoral intermediaries, statutory agencies, government departments as well as national and international academic institutions. These stakeholder engagements are illustrated in the following diagram and moving forward QCAP will aim to leverage optimal collaborative

advantage by working with these other organisations on an individual and collective basis. Across this growing network there is also significant opportunities where QCAP are or can potentially develop multi-lateral relationships to ensure strategic working and accelerated impact, especially for its place-based partners.

“QCAP consistently demonstrates a commitment to work directly with its local partners to identify and drive changes which reflect the real needs of the Market community and which impact positively on the lives of residents... This approach empowers the community and will, I have no doubt, help develop the next generation of community leaders in the Market”

John Gormley, Belfast City Councillor, Botanic Area

Strategic relationships



“Thrilled to have an international partnership, in particular one that is congruent with some of our most important research project, particularly those that promote the leadership and coaching of young people with lived experience”

Dr Anne Farrell, Director of Research, Chapin Hall

QCAP CASE STUDY

Impact through multi-lateral relationships



QCAP's academics provide engaged research support for BUILD Shankill who are currently lobbying the Northern Ireland Housing Executive to release vacant sites for local housing redevelopment. In parallel to their work supporting BUILD, the same QCAP academics are also advising officials from Housing Executive to how to develop a local regulatory environment and enabling framework to support Community-led housing models more broadly across Northern Ireland.

If realised soon, this policy and enabling support would encourage such community-based models, especially where the BUILD group is active in deprived communities like the Shankill.



QCAP academics present their local housing market and site analysis to stakeholders working with the BUILD project on the Greater Shankill

“ The impact of the GII’s (Global Innovation Institute) work with QCAP has already been significant, brokering partnerships between academics and strategic research staff and community representatives, which has had a major role in shaping our multidisciplinary research development plan, which will direct our R&D over the next several years to ensure that a large part of the research and innovation that develops under the BRCD is community-driven, challenge-led and co-designed; delivering tangible, societal benefits”

Gavin Williamson, Multidisciplinary Research Development Manager, The Global Innovation Institute, QUB)

“ W5 LIFE have worked closely with academics from QCAP to promote and understand the issues around raising awareness of general STEM and STEAM topics across community groups. We are collaboratively addressing various pitfalls such as connecting into local communities to provide STEAM opportunities and are investigating the scope for future working/partnership development”

Julia Carson, Education Industry Liaison, W5 LIFE, Belfast

“ I think it’s fantastic a community is thinking about this issue and want to know how to administer Naloxone and save a life”

Iain Cameron, Extern

“ 30 residents undergone Naloxone training”

Health Action Group, MDA

Aligning our institutional engagement and community research agenda

QCAP is already embedded in cross cutting university initiatives that focus on supporting engagement and research with surrounding communities which include:

- Widening Participation and QCAP's delivery of the highly impactful STEAM Summer School 2023.
- The Belfast Region City Deal (BRCD) and Momentum 1.0, which explores ways to include communities in the future roll out of associated BRCD projects and programmes.
- Supporting the institution and its delivery of the Belfast Business Promise, specifically by linking emerging training and employability activities with our partner communities.
- Developing the teaching and learning offer of QCAP across the institution through UG and Master level modules but also through the wider dissemination of QCAST's and QCAPTURES as a supporting learning resource.
- Supporting engaged research within SSESW, AHSS and across all University faculties, connecting expertise with lived experience for enriched, impactful learning.



Queen's Vice-Chancellor, Minister for Communities and senior DfC and NI Civil Service officials visited the Market area for a site tour and meeting with QCAP and the Market Development Association

“ As a school, we are driven by our vision and moral purpose, which is to improve life chances and make a positive difference to people and communities through our research as well as our teaching. QCAP plays a central role in fulfilling this vision through genuine co-construction with local communities such as the Markets and the Shankill around their needs, which at the same time makes an important contribution to the international knowledge base on developing equity through place-based approaches. QCAP can also contribute to the School of Social Sciences, Education and Social Work strategy for making a social difference, engaged research, internationalisation, and reputation.

Professor Daniel Muijs, Head of School Social Sciences, Education and Social Work

Maximising wider opportunities and building our UKRI footprint

The QCAP approach has within less than 2 years successfully attracted the interest of range of UKRI large scale strategic initiatives.

QCAP is the Northern Ireland delivery partner within the ESRC led local policy innovation partnership initiative 2023-2026 (£3 million led by Birmingham). Innovate UK led community research networks. The AHRC Creative Communities initiative and along with colleagues across the UK has been shortlisted to phase 2 of the ESRC Centre call for Centre in Community Participation and Connectedness (£5million).

QCAP is also leading a €6 million bid with Trinity College Dublin, University of St Andrews and the Digital Health innovation Centre Scottish Government to strand 4.1 of the Peace Plus initiative.

The QCAP approach was also presented during the key note address at the European Consortium

of Innovative Universities Conference held in Barcelona during October 2023.

The team is also active in submissions to a range of programmatically relevant calls such as the 'Enable discovery and use of UK census 2021/2' (£500K).

QCAP is also well positioned as part of the delivery team of the UKRI Strategic Co-ordination hub of Local Policy innovation Partnerships to contribute to UK wide policy on what works in place, showcasing the work of QUB across academic and sectoral partners across all regions of the UK. This is further enhanced by QCAP's growing connections with the National Coordinating Centre for Public Engagement (NCCPE).



QCAP and the Market Development Association Chief Scientific Officer for Department for DCMS for a site visit of the Market community

International reach

QCAP understands that the challenges and opportunities within place-based working in NI are reflected globally. QCAP is well positioned to be at forefront of international research and innovation work to allow best practice within QUB to be shared and opportunities for joint working and funding to be optimised.

QCAP's international Advisory group is well embedded and is working with the team to maximise opportunities for funding and joint projects, raising the profile of QCAP further.

QCAP has forged links with international academic institutions (e.g. University of Chicago Chapin Hall with whom we have conducted a joint research symposium and joint publications (special Issue of the Journal of Child and Family welfare), Belmont University through which academic knowledge exchange and joint bid opportunities are progressed e.g. data collaborative in Belmont.

Phase 2 of QCAP will consolidate these existing key strategic international relationships and place greater emphasis on joint funding and structured knowledge exchange programmes.

It will also develop a **QCAP fellowship scheme** to attract funding from outside and consolidate international strategic partnerships, networks and thought leadership to increase focused knowledge exchange partnerships between institutions.



The QCAP team and Market Development Association staff visit Chapin Hall at the University of Chicago to present their research at an Irish American Symposium

Reflections from the director

QCAP continues to serve a vital function in advancing Queens' civic and social responsibility commitments. Activity over phase one has demonstrated how we have worked with communities to deliver highly impactful and relevant research alongside our community partners to address pressing issues highlighted by them. In doing so, we have also connected academic and professional services colleagues across disciplines within QUB, nationally and with our US colleagues in Chicago and Nashville.

This outline of QCAP's initiatives and activities undertaken during Phase One shows the significant progress made across our dimensions of place relevant to mental health equity, social and economic sustainability, education, and skills. Overall, Phase One has been a highly productive and rewarding phase of work for QCAP and I wish to thank our talented researchers, dedicated academic staff leads, our generous funders, and external partners who made this work possible. As we look ahead, I am excited by QCAP's potential to catalyse meaningful scholarship that creates positive change. Guided by our community engagement and social charter and QUB Strategy 2030, I am confident we will continue to make valued contributions to academic discourse, civic engagement, and impact across local communities.

To learn more about specific accomplishments that defined phase one, please contact team members via our QCAP website. Leading this exceptional team of scholars, university colleagues, community leaders and residents has been a privilege and I look forward to our continued collective success in the many years ahead.

Professor Kathryn Higgins, Director of QCAP



Engaged research outputs

Academic publications

Higgins, K., Kelly, G., Kelly, U., Grounds, A., and Munck, R. (2023) "Exploring an Innovative Method for Objectively Assessing the Social Value of University-Community Engagement and Research" *Journal of Methodological Innovations* 0 (0). <https://doi.org/10.1177/20597991231212237>

Higgins, K., Murtagh, B., Gallagher, T., Grounds, A., Robinson, G., Loudon, E., Duffy, G., Brady, A., Hargey, F., Doherty, M. "Queen's Communities and Place – Toward the Alignment of Higher Education Place-Based Strategy with Local Need" *Research for All Journal* (in press)

Robinson, G., Hargey, F., & Higgins, K. (2023). "We must dissent": How a Belfast urban community is building critical consciousness for spatial justice. *Policy & Practice: A Development Education Review*, 2023(36), 33-50.

Loudon, E., Neary, J., Higgins, K., Chapman, C., and McAteer, B. (2023) "A causeway to impact: A proposed new integrated framework for intergenerational community-based participatory action research", *Children & Society* (in press)

Maddock, A., McGuigan, K., McCusker, P., Kellock, J. (2023). "The mindfulness-based social work and self-care programme: a focus group study." *Clinical Social Work Journal*, 2023. [Early online] <https://doi.org/10.1007/s10615-023-00897-9>

Dhunnoo, P., Kemp, B., McGuigan, K., Meskó, B., O'Rourke, V., McCann, M. (2023). "Health Outcomes, Attitudes, and Improvements of Synchronous Virtual Consultations for Non-Malignant Chronic Illnesses: A Scoping Review." *JMIR [Preprints]*. <https://doi.org/10.2196/preprints.53266>

Morse, A., McGuigan, K., Brady, A., Hargey, C., Higgins, K. (2023). "Community Perspectives to Inform Substance Use Prevention Practice." *European Journal of Public Health*, 2023;33(S_2):ckad160.1458. <https://doi.org/10.1093/eurpub/ckad160.1458>

Policy and technical advisory papers

Grounds, A., and Murtagh, B (2024). *Evaluation of the Glens Healthy Places Programme*. QCAP Research Evaluation published on Northern Area Community Network Website. Queen's University Belfast. (forthcoming)

Grounds, A., Murtagh, B., and DTNI (2023). *Community Wealth Building Partnership Roadmap*. Published by DTNI, Belfast.

Grounds, A., and Murtagh, B (2023). *East Belfast Mission and Transitional Homeless Housing: A Social Value Impact Appraisal*. QCAP Research Paper presented as part of an application to Financial Transactions Capital funding via Department for Finance, Queen's University Belfast. (Not for Public Dissemination)

Grounds, A., and Murtagh, B (2023). *A Social Impact Analysis of the Belfast Works Programme 2018-2023*. QCAP Research Paper presented as supplementary evidence and support for a Shared Prosperity Fund application, Queen's University Belfast. (Not for Public Dissemination)

Grounds, A., and Murtagh, B (2023). *Pantry Impact Statement 2022*. QCAP Research Paper to the Pantry (Ashton Community Trust) to help develop their engagement with funders and social investors, Queen's University Belfast.

Grounds, A., Murtagh, B., and DTNI (2023). *Community-led Housing in Northern Ireland*. Policy Research Paper published by DTNI to the Northern Ireland Housing Executive, Belfast, Northern Ireland.

Murtagh, B., Grounds, A., DTNI., and Trademark NI., (2022). *Next Steps in Community Wealth Building*. Technical Advisory Paper published by DTNI to the Department for Communities, Belfast, Northern Ireland.

Murtagh, B., Grounds, A., DTNI., and Trademark N (2022). *Community Wealth Building in Northern Ireland: Plural ownership of the economy*. Policy Advisory Paper published by DTNI to the Department for Communities, Belfast, Northern Ireland.

Murtagh, B., Grounds, A., DTNI., and Trademark NI., (2022). *Community Wealth Building in Northern Ireland: Making financial power work for local places*. Policy Advisory Paper published by DTNI to the Department for Communities, Belfast, Northern Ireland.

Murtagh, B., Grounds, A., DTNI., and Trademark NI., (2022). *Community Wealth Building in Northern Ireland: Fair employment and just labour markets*. Policy Advisory Paper published by DTNI to the Department for Communities, Belfast, Northern Ireland.

Murtagh, B., Grounds, A., DTNI., and Trademark NI., (2022). *Community Wealth Building in Northern Ireland: Socially productive use of land and property*. Policy Advisory Paper published by DTNI to the Department for Communities, Belfast, Northern Ireland. (Not for Public Dissemination)

Murtagh, B., Grounds, A., DTNI., and Trademark NI., (2022). *Community Wealth Building in Northern Ireland: Progressive procurement of goods and services*. Policy Advisory Paper published by DTNI to the Department for Communities, Belfast, Northern Ireland.

Murtagh, B., and Grounds, A (2022). *BUILD – Rebuilding the Shankill and its asset base*. QCAP Research Paper presented to BUILD steering group and published on BUILD website. Queen’s University Belfast.

Murtagh, B., and Grounds, A (2022). *Impact Investment Analysis on the Market Heritage Hub*. QCAP Research Paper presented as supplementary evidence to Belfast City Council and the Neighbourhood Renewal Fund, Queen’s University Belfast.

Murtagh, B., Grounds, A., DTNI., and Trademark NI., (2022). *Asset-based development and community wealth building*. Policy Advisory Paper published by DTNI to the Department for Communities, Belfast, Northern Ireland.

Protocols, evidence and learning briefs

McGuigan, K., Brady, A., Robinson, G., and Higgins, K (2023). *Legacy in substance use: Using the Arts to empower communities to break cycles of silence*. QCAP Protocol developed as part of the successful funding application to Arts and Humanities Research Council (AHRC). (Not for Public Dissemination)

McGuigan, K., Brady, A., McKnight, N., and Higgins, K (2023). *The Community Wellbeing Kitchen: Extending models of practice*. QCAP Protocol developed as part of the successful funding application to SREF. (Not for Public Dissemination)

McGuigan, K., Grounds, A., McKnight, N., and Higgins, K (2023). *QCAP approach: A framework for data ethics and governance in community engaged research*. QCAP Protocol. (Not for Public Dissemination)

McGuigan, K., Brady, A., Loudon, E., Morse, A., Higgins, K (2023). *Co-design and feasibility of substance use interventions in the Market Community, Belfast*. QCAP Protocol. (Not for Public Dissemination)

Grounds, A., and Murtagh, B (2022). *Glens Healthy Places programme: Glens Men Project*. QCAP Learning Brief published on Northern Area Community Network Website. Queen’s University Belfast.

Grounds, A., and Murtagh, B (2022). *Glens Healthy Places programme: Participatory Budgeting Across the Glens*. QCAP Learning Brief published on Northern Area Community Network Website. Queen's University Belfast.

Data for action tools

Grounds, A., and Murtagh, B., and DTNI (2023). *Community Wealth Building Partnership Profile: Larne*. Published by DTNI, Belfast.

Grounds, A., and Murtagh, B., and DTNI (2023). *Community Wealth Building Partnership Profile: North-West*. Published by DTNI, Belfast.

Grounds, A., and Murtagh, B (2022). *BUILD – Interactive Site and Asset Register*. QCAP Data Research Tool shared BUILD steering group and published on BUILD website. Queen's University Belfast.

McGuigan, K., Loudon, E., Higgins, K. (2023). "Place-based, community-academic partnership: A scoping review [Registration]". Open Science Framework. <https://doi.org/10.17605/OSF.IO/M4WCE>

Conference papers and presentations

Morse, A. (2023). *Community Perspectives to Inform Substance Use Prevention Practice* delivered at European Public Health Conference - Dublin, Ireland. 9-11 November 2023

Grounds, A (2023). *Engaged Research and Data for Action, Conference Presentation* delivered at the Belmont Data Collaborative Data EXPO November 2023 – Nashville, Tennessee.

Higgins, K., and Grounds, A (2023). *Engaged Research in Action: Queen's Communities and Place Belfast, Keynote Conference Address* delivered at the Engaged Consortia of Innovative Universities Conference in October 2023 – Barcelona.

Grounds, A., and Murtagh, B (2023). *Hosford Community Homeless Housing, Symposium Presentation* delivered at the Irish American Engaged Research Symposium Chapin Hall – University of Chicago in May 2023 – Chicago.

Robinson, G. (2023) 'Community Innovation Ecosystem: An inclusive approach for Smart Belfast'. *Smart Cities Working Group*. CONNECT, Trinity College Dublin. 4 October 2023.

Robinson, G., Shakeel, H., Hargey, C., & Carragher C (2023) 'Smart City-zens' [Presentation], *Catalyst Inbound Investors 2023: GII Pilot Projects Showcase*. Global Innovation Institute, QUB. 14 September 2023.

Robinson, G. (2023) 'Critical Educational Landscapes: Empowering Communities for Transformative Education', *Towards a Collaborative Agenda for Engaged Education Research: Addressing educational inequality using place-based approaches*. Queen's University Belfast. 22 June 2023.

Robinson, G. & Hargey, C. (2023) Education & the Knowledge Economy: 'Citizen science as a foundation for inclusive innovation', *Irish American Engaged Research Symposium*. Chapin Hall, University of Chicago. 15 May 2023.

Robinson, G. (2023) 'Belfast's Urban Future and Local Communities', *Personality in Urban Futures*. School of Psychology, Queen's University Belfast. 30 March 2023.

Community engagement: events, workshops and seminars

Morse, A (2022). **Strategic Engagement.** *Data management and analytics* [Partner Training]. QCAP & MDA. September.

Higgins, K., McKnight, N., Grounds, A., McGuigan, K., Loudon, E., Brady, A., McNally, P., Piekaar, D., & Robinson, G (2023). **Strategic Engagement.** *Research Ethics* [Training]. QCAP. 24th April.

Morse, A., & Grounds, A (2023). **Strategic Engagement.** *Community Data Dashboard* [Partner Training]. QCAP & MDA. April 2023.

Higgins, K (2023). **Strategic Engagement.** 'Innovation and Inclusive Growth: Reimagining the Belfast Region'. *Innovation After Hours with Janet Corcoran* [Panel Member]. Belfast Region City Deal, QUB. 11th May.

Higgins, K., McKnight, N., Robinson, G., Brady, A., & Bailie, K (2023). **Strategic Engagement.** *Hosted Fulbright Scholar* [Education & Student Experience]. QCAP & Belfast Region City Deal, QUB. 24th April – 12th May.

McKnight, N., & Brady, A (2023). **Strategic Engagement.** *Fulbright Scholar: Consultation with young people and families* [Focus group]. QCAP, MDA, & Réalta Football Club. May.

Robinson, G., Higgins, K. McKnight, N., Brady, A., Grounds, A., Loudon, E., McGuigan, K (2023). **Strategic Engagement.** 'Communities And Place: Lasting solutions for local challenges'. *AHSS International Summer School* [Education & Student Experience]. QCAP & MDA. 26th June – 27th July.

Robinson, G., Brady, A., Gallagher, A., & Duffy, G (2022). **Education and the Knowledge Economy.** *Market Community Schools Network* [Engaged Research Mechanism]. QCAP, MDA, St Malachy's PS, St Joseph's College & Scoil an Droichid. Ongoing – Termly.

Brady, A., Robinson, G., Gallagher, A., & Duffy, G (2022). **Education and the Knowledge Economy.** *Education Action Group* [Engaged Research Mechanism]. QCAP, MDA & Market Residents. Ongoing – Bi-Monthly.

Brady, A., Robinson, G., McKnight, N., & McNally, P (2022). **Education and the Knowledge Economy.** *STEAM Scheme Development at W5 Dreamspace* [Co-Design Workshop]. QCAP & MDA. 2nd November.

Robinson, G., Brady, A., McKnight, N., McGuigan, K (2023). **Education and the Knowledge Economy.** *Connector Course Development* [Co-Design Workshop]. QCAP, MDA, Market Surestart & Belfast MET. 4th April.

Robinson, G., Gallagher, A., & Brady, A (2023). **Education and the Knowledge Economy.** *Market Schools, Teaching Assistant Meeting* [Consultation]. QCAP, St Malachy's PS, St Joseph's College & Scoil an Droichid. 13th June.

Robinson, G., Gallagher, A., Duffy, G., & Brady, A (2023). **Education and the Knowledge Economy.** *Towards a Collaborative Agenda for Engaged Education Research: Addressing educational inequality using place-based approaches* [Roundtable Event]. Queen's University Belfast. QCAP, MDA, University of Glasgow (Robert Owen Centre), UCLA, Dept of Education NI & Education Authority NI. 22nd June.

Robinson, G. Brady, A., McNally, P., & McKnight, N (2023). **Education and the Knowledge Economy.** *Tech Creators STEAM Scheme* [Education & Student Experience]. QCAP, MDA & Global Innovation Institute. 24th - 28th June.

Robinson, G., Gallagher, A., Duffy, G., & McKnight, N (2023). **Education and the Knowledge Economy.** *Supportive infrastructure for primary schools in South Belfast* [Consultation]. QCAP & Forward South. 11th October.

Robinson, G (2023). **Education and the Knowledge Economy.** *ICT OCN co-design with residents* [Workshop]. QCAP, MDA & W5Life. 7th November.

Higgins, K., McKnight, N., Brady, A., Loudon, E., Morse, A., McNally, P., & McGuigan, K (2022-). **Community Health and Wellbeing.** *Health Action Group: Planning, development, and implementation of health priorities in the Market* [Engaged Research Mechanism]. QCAP, MDA. Ongoing – Monthly.

Higgins, K., McKnight, N., Brady, A., & McNally, P (2022). **Community Health and Wellbeing.** *Community Naloxone Programme* [Partner Training]. QCAP, MDA, EXTERN, Market residents, St Malachy's Youth Centre, Réalta Football Club and St Malachy's GAC. December 2022.

Higgins, K. Brady, A. Loudon, E. Morse, A., McKnight, N., & McGuigan, K (2023). **Community Health and Wellbeing.** *Tackling Substance Use Together* [Community Consultation]. QCAP, MDA & Market residents. February 2023.

McGuigan, K., Brady, A., & McKnight, N (2023). **Community Health and Wellbeing.** *Designing the Community Wellbeing Kitchen together: community priorities, options and opportunities* [Co-Design Workshop] QCAP, MDA, Market Sure Start, & Market Residents. April 2023.

McKnight, N., Brady, A., & McNally, P (2023). **Community Health and Wellbeing.** *Developing the Community Wellbeing Kitchen and Cook It Programme* [Co-Design Workshop]. QCAP, Public Health Agency & MDA. June.

Higgins, K. Brady, A. Morse, A., McKnight, N. & McGuigan, K (2023). **Community Health and Wellbeing.** *Tackling Substance Use Together: Moving Forward* [Co-Design Workshop]. QCAP, MDA & Market residents. June 2023.

McGuigan, K. Brady, A. & McNally, P (2023). **Community Health and Wellbeing.** *Cook-It Programme* [Partner Training]. QCAP, BHSCT Public Health Dietitian Team. August 2023.

Loudon, E., Brady, A., & McGuigan, K (2023). **Community Health and Wellbeing.** *Parental Mental Health Research and Practice: Exploring a joint pathway forward* [Co-Design Workshop]. QCAP, Centre for Public Health, King's College London, Regional Trauma Network, BHSCT, NHSCT, SHSCT, WHSCT & service users. September 2023.

Brady, A., McGuigan, K., Robinson, G., Higgins, K., McKnight, N., & McNally, P (2023). **Community Health and Wellbeing.** *AHRC-QCAP Creative Communities Programme Initiation with Prof Katy Shaw* [Consultation & Site Visit]. QCAP, AHRC, MDA & Market residents. October 2023.

McGuigan, K., Brady, A., Loudon, E., & Morse, A (2023). **Community Health and Wellbeing.** *Co-designing a Substance Use intervention for adults and parents: Purpose, Target Audience, Content/ Topics* [Co-Design Workshop]. QCAP, MDA & Market residents. October 2023.

McGuigan, K., Brady, A., Loudon, E., & Morse, A (2023). **Community Health and Wellbeing.** *Co-designing a Substance Use Intervention for Adults/Parents: structure, format and delivery.* [Co-Design Workshop]. QCAP, MDA, & Market residents. October 2023.

Murtagh, B., and Grounds, A (2022). **Social Economics and Community Wealth Building.** *Housing Market Analysis and Interactive Site Register* [Partner Training]. QCAP, BUILD & Greater Shankill Partnership Board. June.

Murtagh, B., and Grounds, A (2023). **Social Economics and Community Wealth Building.** *Townscape Analysis Review with BUILD working group,* [Workshop] QCAP, BUILD & TODD Architects. June.

Murtagh, B., and Grounds, A (2023). **Social Economics and Community Wealth Building.** 'The social return on investment of transitional homeless housing models' [Keynote]. *You're Home Launch.* Stormont, Belfast. QCAP, East Belfast Mission & Commonweal. September.

Grounds, A (2023). **Social Economics and Community Wealth Building.** 'Community-led housing models across Northern Ireland', [Presentation] *DTNI Community-led housing Research Launch.* Dungannon, NI. QCAP & DTNI.



**QUEEN'S
UNIVERSITY
BELFAST**

**COMMUNITIES
AND PLACE**